

3CA:124



SUBMISSION 07-21-17

3CA-124 3 BEDROOM MODEL RESIDENCE  
 ARCHITECTURAL INFORMATION PLAN  
 PHASE II  
 APPROVAL:  
 DRAWN BY: DM,AB  
 CHECKED BY:

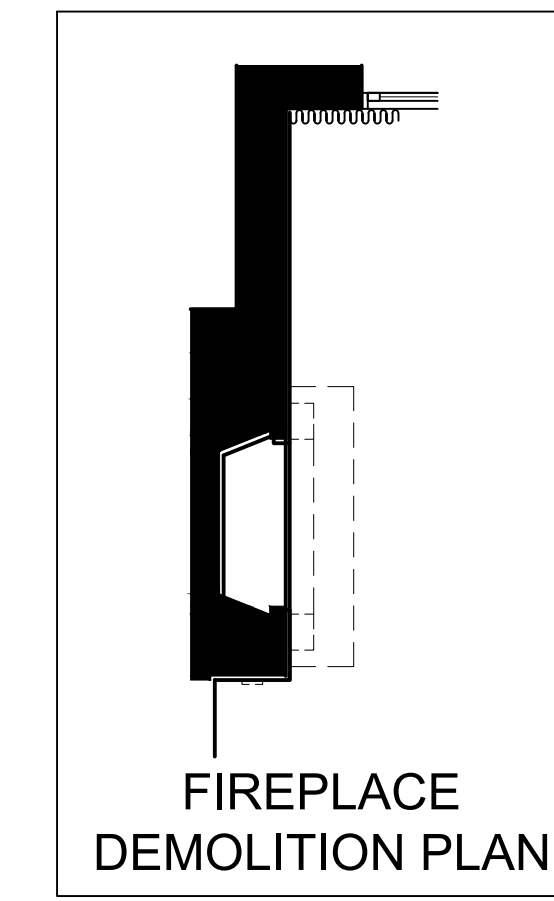
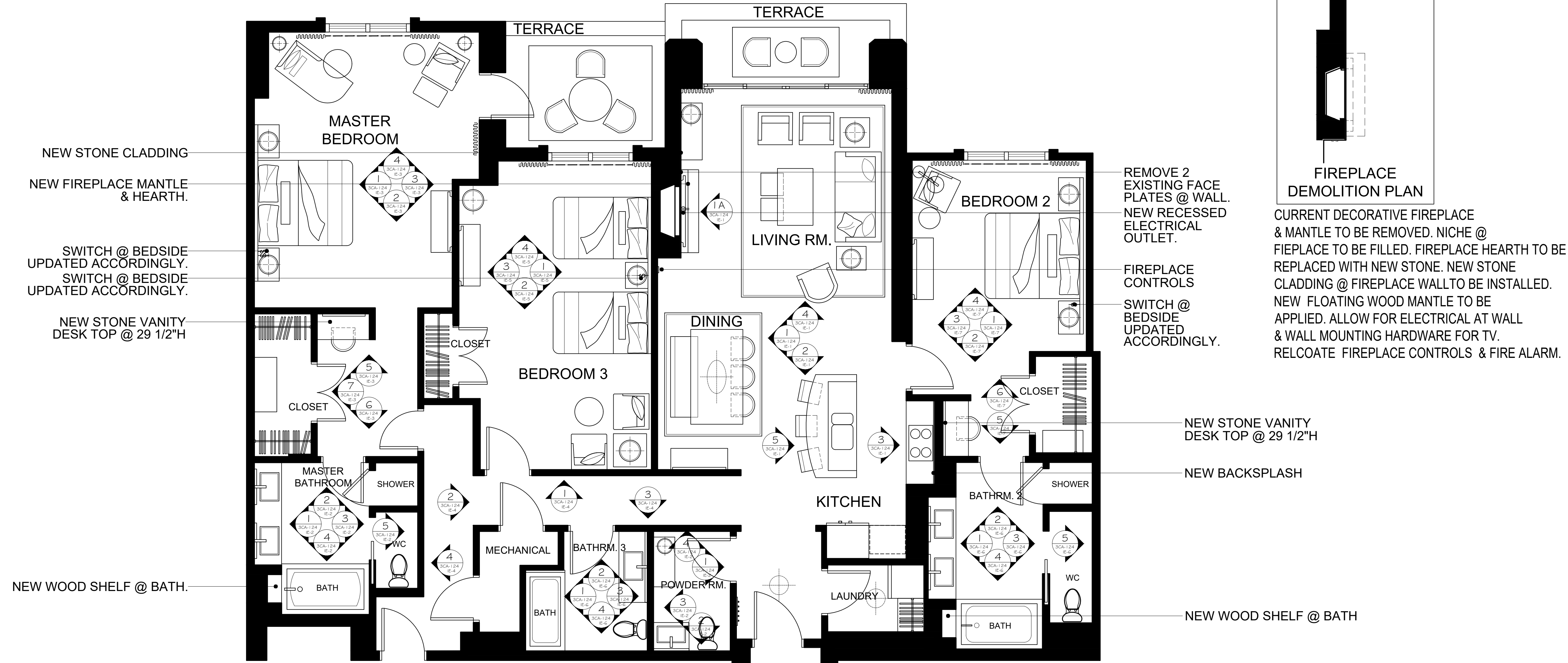
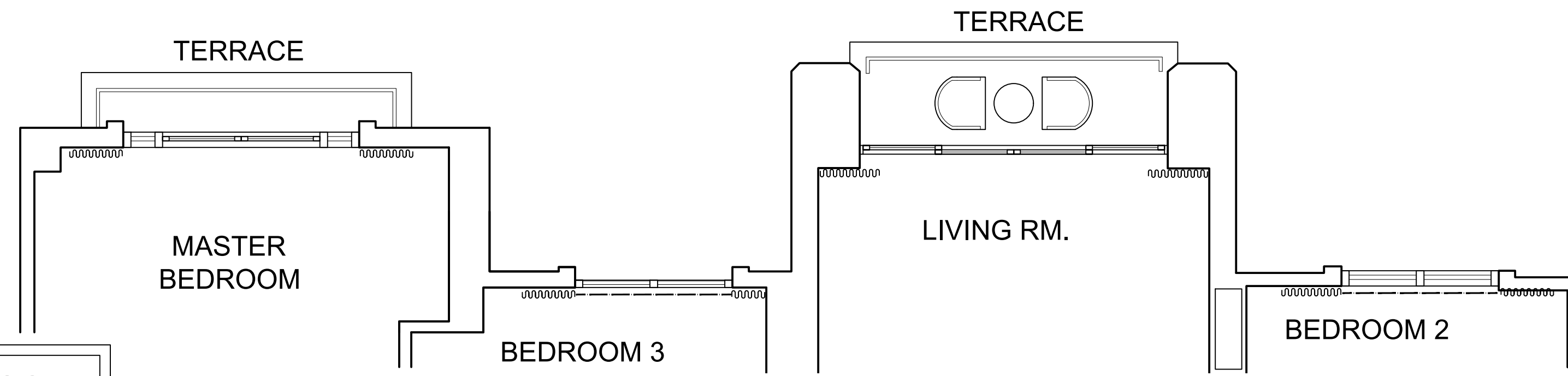
REVISIONS  
 SCALE: 1/4"=1'-0  
 JULY 2017  
 PROJECT NO. 1703

PROGRESS  
 GR-AR  
 3CA-124

3CA:124,224,  
324,424

3CA:224,324,424

3CA:124



CURRENT DECORATIVE FIREPLACE & MANTLE TO BE REMOVED. NICHE @ FIREPLACE TO BE FILLED. FIREPLACE HEARTH TO BE REPLACED WITH NEW STONE. NEW STONE CLADDING @ FIREPLACE WALL TO BE INSTALLED. NEW FLOATING WOOD MANTLE TO BE APPLIED. ALLOW FOR ELECTRICAL AT WALL & WALL MOUNTING HARDWARE FOR TV. RELCOATE FIREPLACE CONTROLS & FIRE ALARM.

3CA-124 3 BEDROOM MODEL RESIDENCE  
ARCHITECTURAL INFORMATION PLAN  
PHASE II  
APPROVAL:  
DRAWN BY: DM,AB  
CHECKED BY:

REVISIONS  
SUBMISSION 07-21-17

SCALE: 1/4"=1'-0

JULY 2017

PROJECT NO. 1703

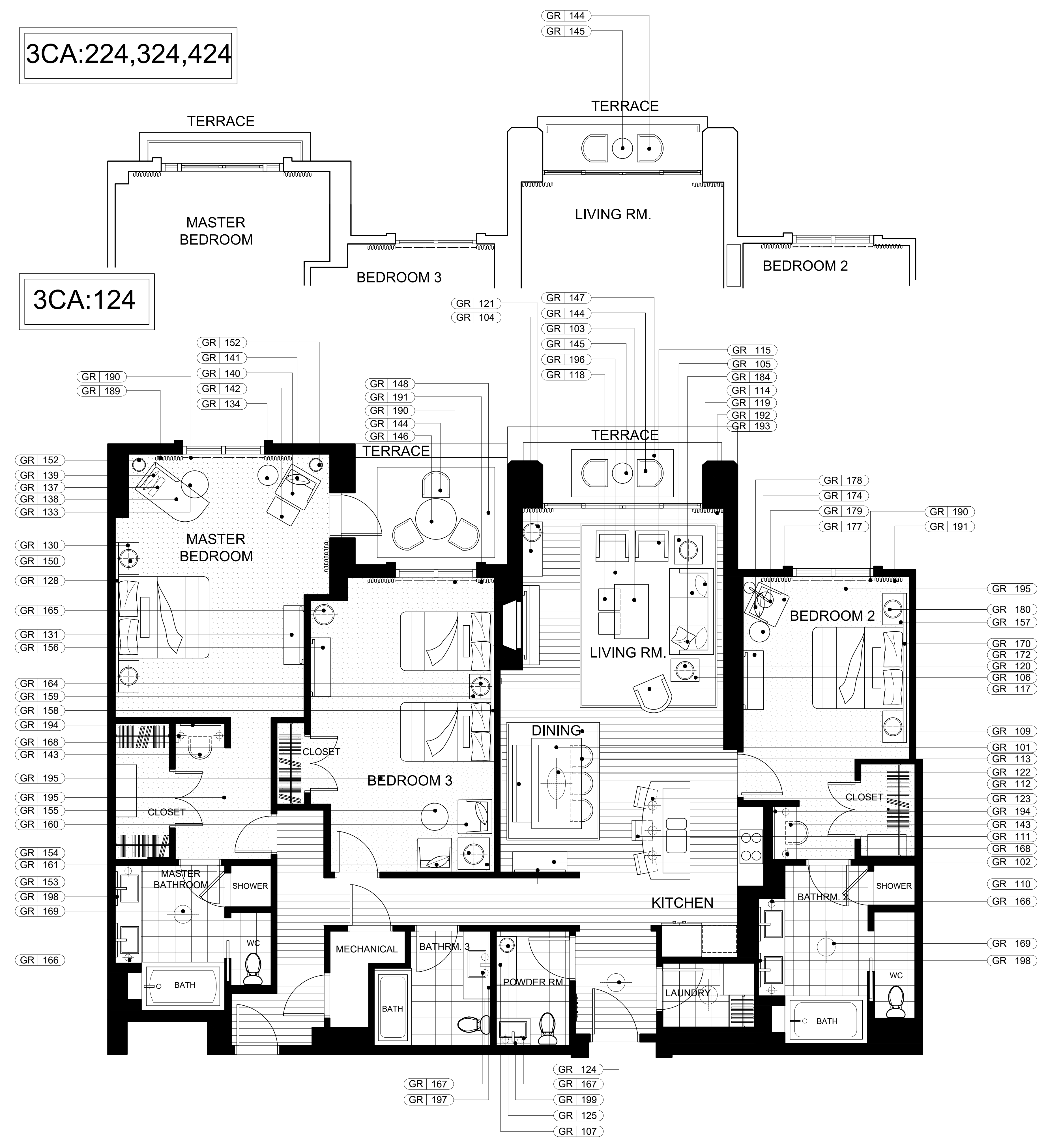
GR-AR  
3CA-124

PROGRESS

3CA:124,224,  
324,424

3CA:224,324,424

3CA:124



3CA-124 3 BEDROOM MODEL RESIDENCE  
 FIXTURES, FURNISHINGS, & EQUIPMENT PLAN  
 PHASE II  
 APPROVAL:  
 DRAWN BY: DM, AB  
 CHECKED BY:

REVISIONS  
 SUBMISSION 07-21-17

SCALE: 1/4"=1'-0  
 JULY 2017  
 PROJECT NO. 1703

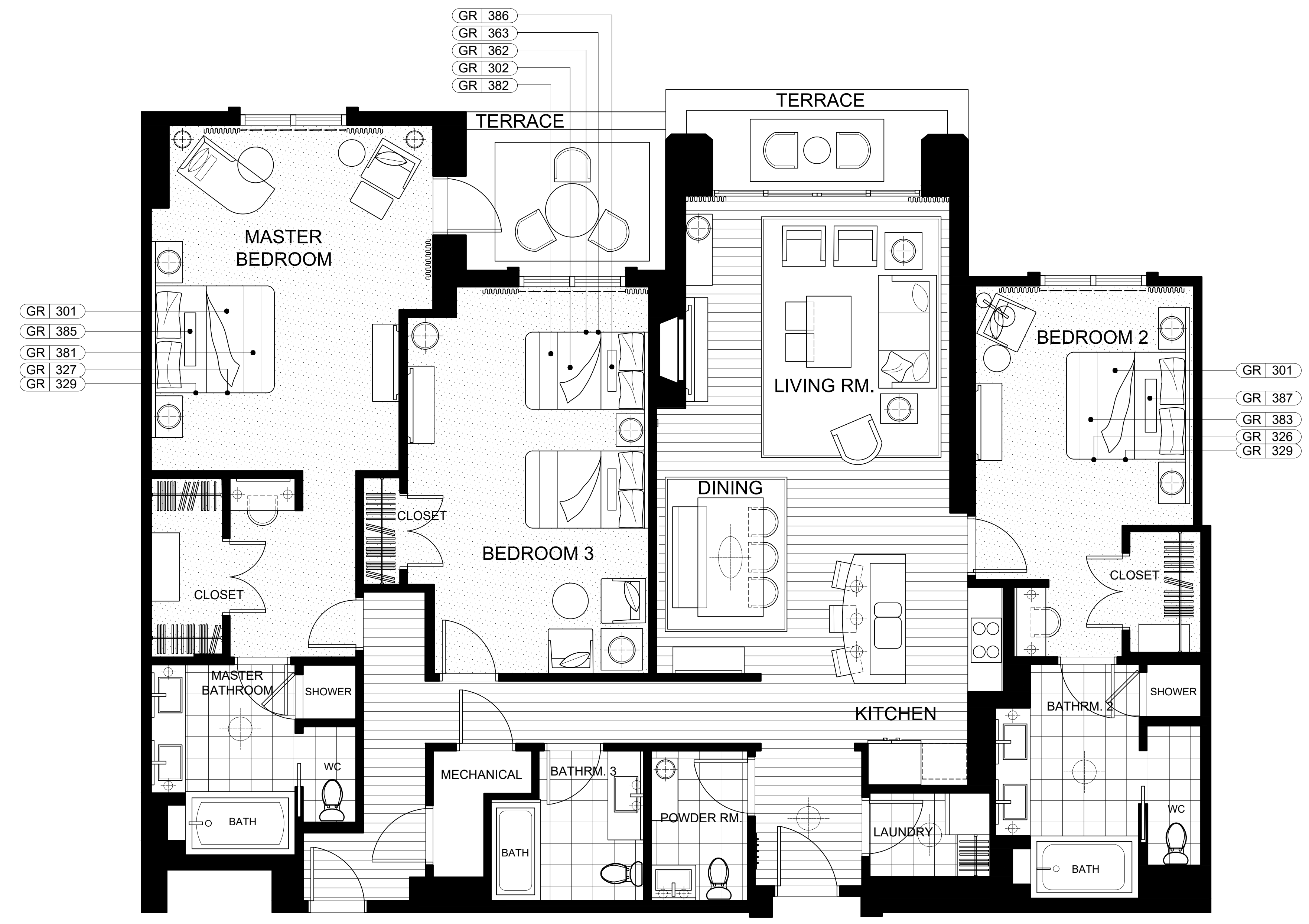
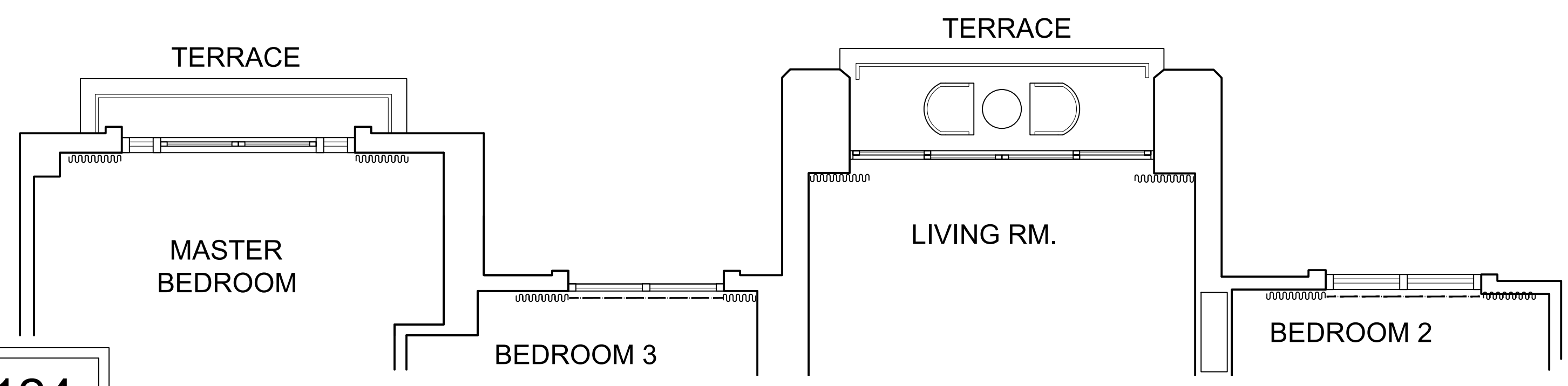
GR-FF  
 3CA-124

PROGRESS

3CA:124,224,  
324,424

3CA:224,324,424

3CA:124



3CA-124 3 BEDROOM MODEL RESIDENCE

BEDDING PLAN

PHASE II

APPROVAL:

DRAWN BY: DM,AB

CHECKED BY:

REVISIONS

SCALE: 1/4"=1'-0

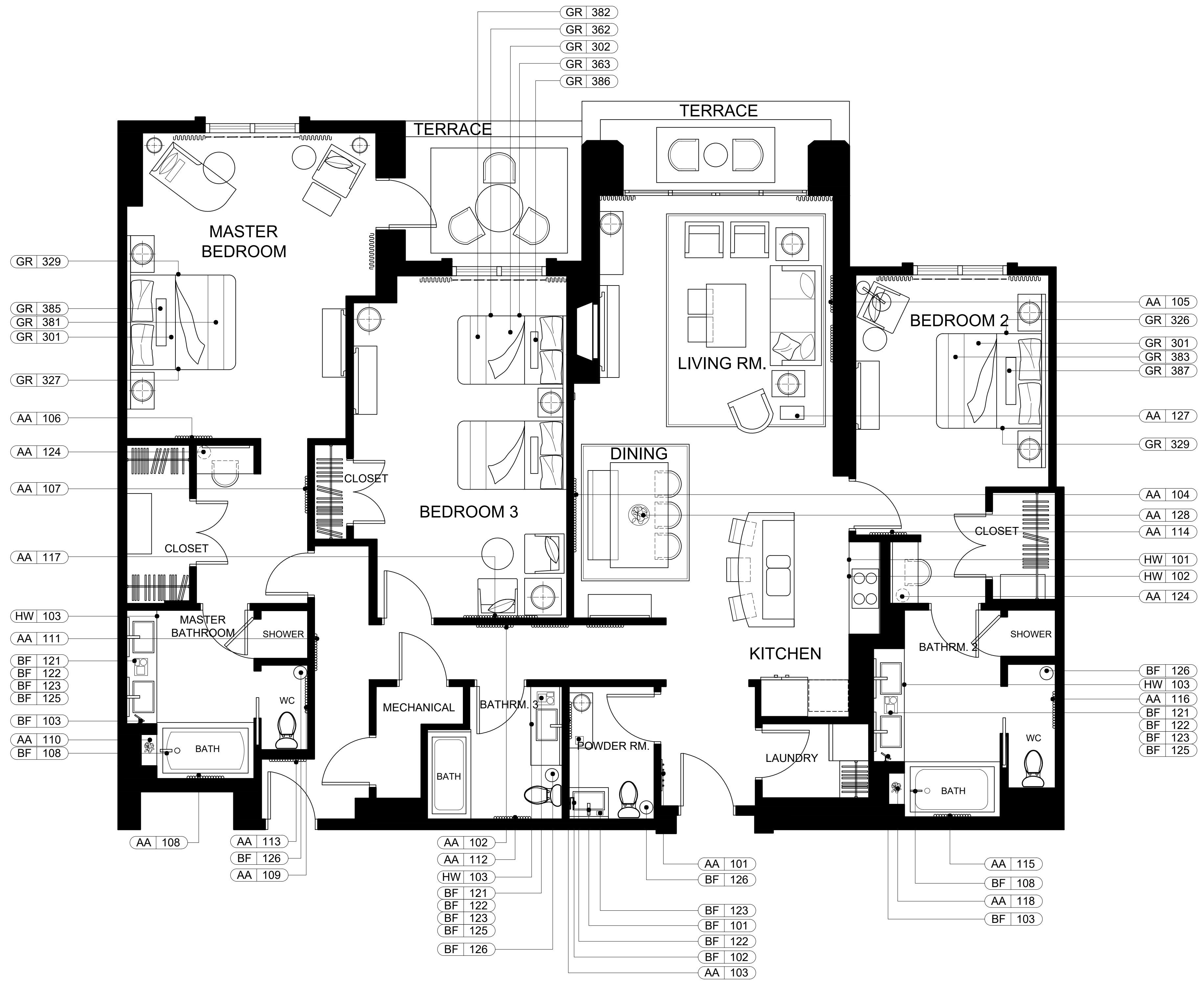
JULY 2017

PROJECT NO. 1703

PROGRESS

GR-BD  
3CA-124

3CA:124,224,  
324,424



3CA-124 3 BEDROOM MODEL RESIDENCE  
ACCESSORIES, BATH FIXT. & HARDWARE PLAN  
PHASE II  
APPROVAL:  
DRAWN BY: DM, AB  
CHECKED BY:

REVISIONS  
SUBMISSION 07-21-17

SCALE: 1/4"=1'-0"

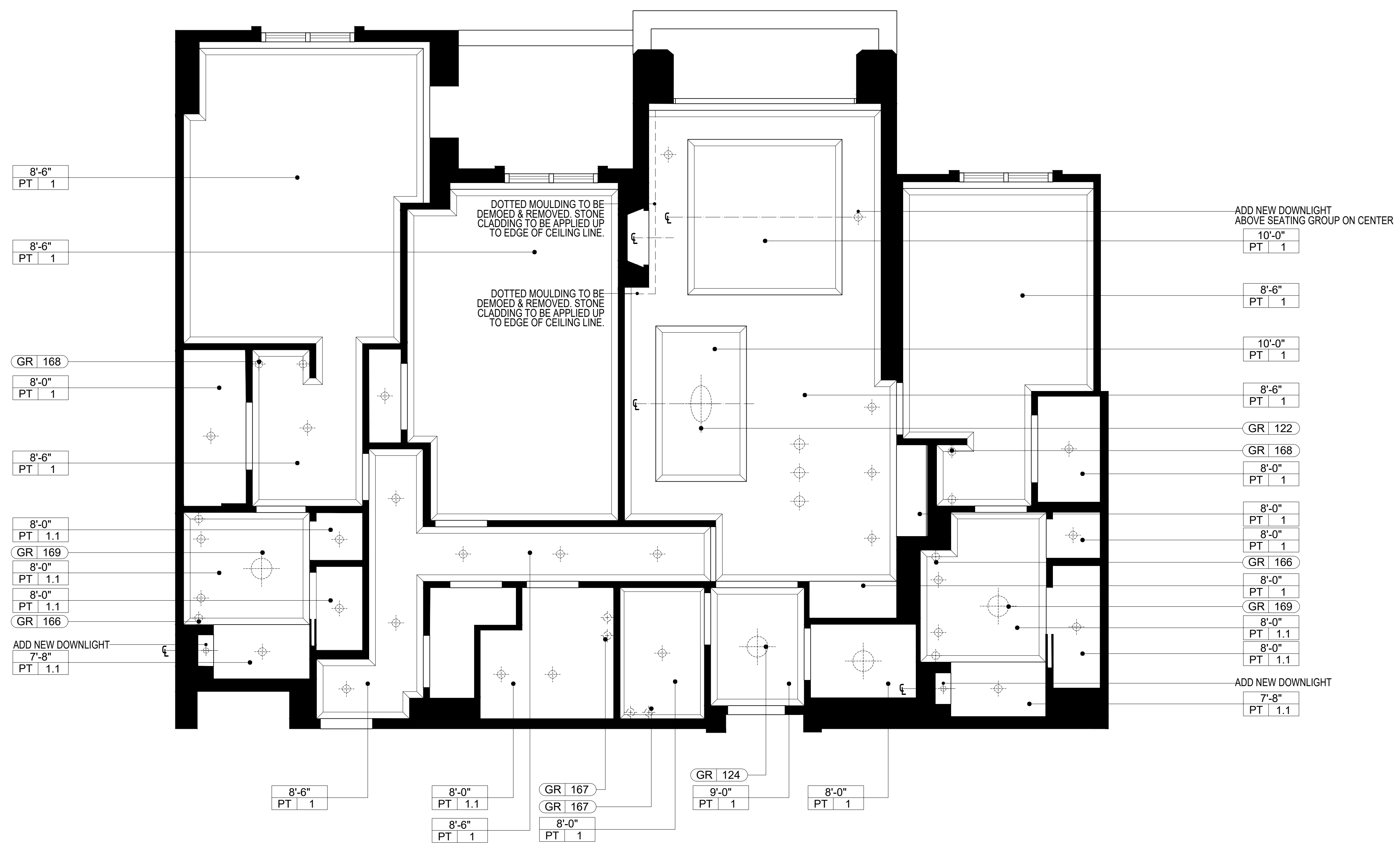
JULY 2017

PROJECT NO. 1703

AA-BF-HW  
3CA-124

PROGRESS

3CA:124,224,  
324,424



3CA-124 3 BEDROOM MODEL RESIDENCE

REFLECTED CEILING PLAN

PHASE II

APPROVAL:

DRAWN BY: DM,AB  
CHECKED BY:

REVISIONS  
SUBMISSION 07-21-17

SCALE: 1/4"=1'-0

JULY 2017

PROJECT NO. 1703

PROGRESS

RC  
3CA-124